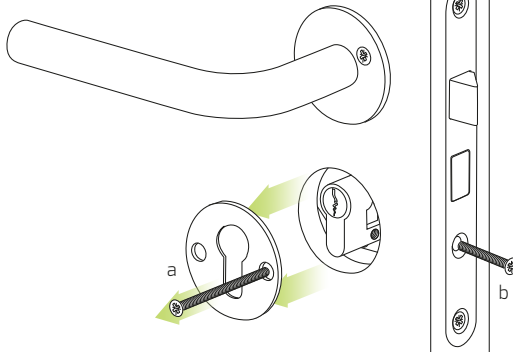


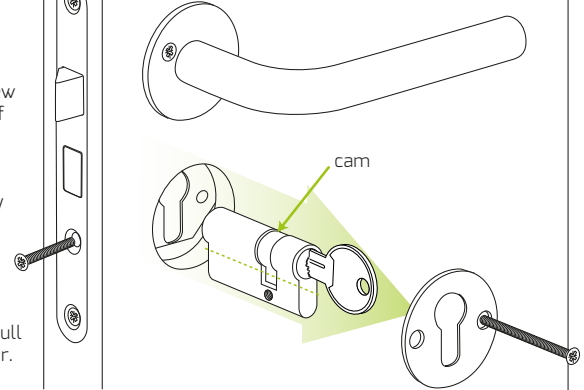
1. Remove the current door lock

First you have to remove your current door lock. Start on the outside of the door by removing the rosette and the screw. (a) Remember to unscrew the lock-screw in the mortise-plate at the side of the door. (b)

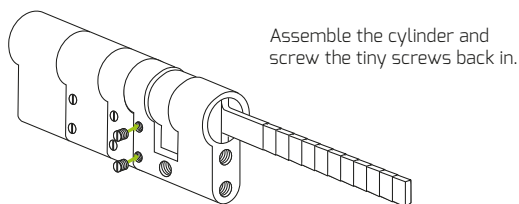
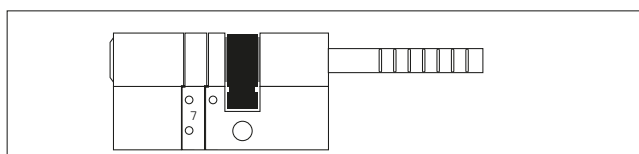
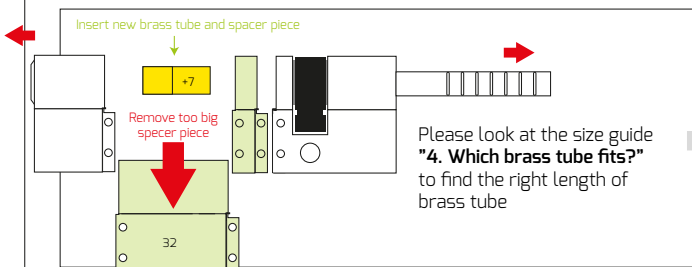
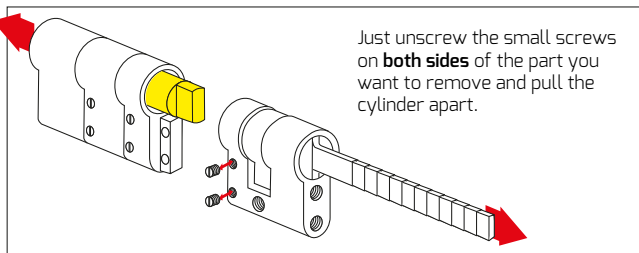
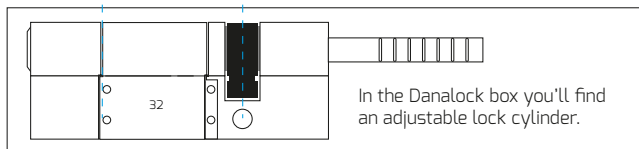
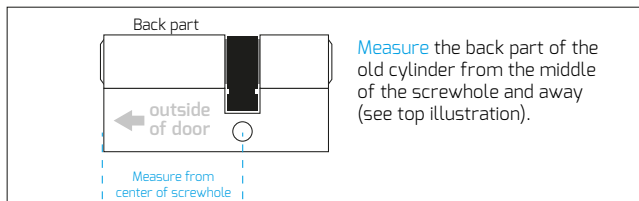


2. Take out the cylinder

Remove the rosette and unscrew the remaining screw on the inside of the door. Save the screw for later use. Insert your key and turn it so the cam lines up with the body of the cylinder. Now you can pull out the cylinder.

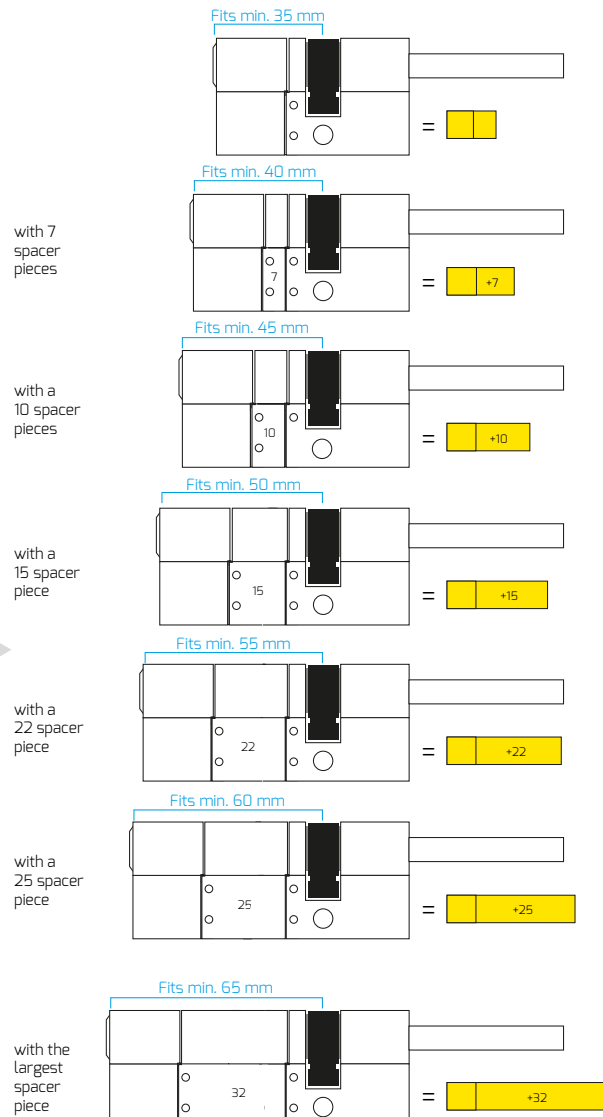


3. Choose your new cylinder



4. Which brass tube fits?

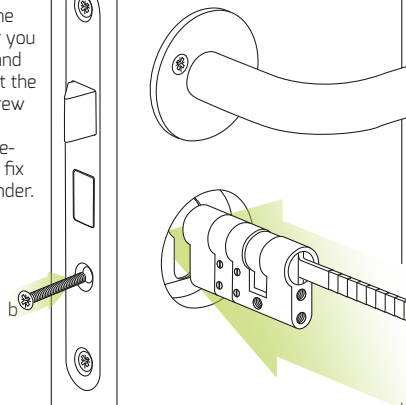
In the Danalock package you'll find an adjustable cylinder, a small screwdriver, two breakable screws and 6 brass tubes. When you remove one or more parts of the cylinder you'll have to exchange the brass cylinder in the center with another that fits the new measurements. Below you see the different combinations and the right brass tube to use.



The full adjustable cylinder as it is from the Danalock package

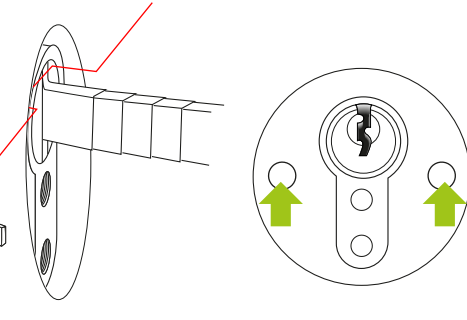
5. Insert the new cylinder

Insert the cylinder you chose, and re-insert the lock-screw in the mortise-plate to fix the cylinder. (b)



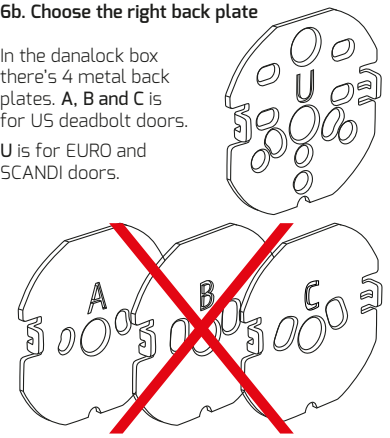
6a. Cylinder length - too short

If the cylinder is **shorter than the thickness of the door** we recommend you use the two holes in the door if it is possible. (ill. 6c). Otherwise use the holes in the cylinder (ill. 7a).



6b. Choose the right back plate

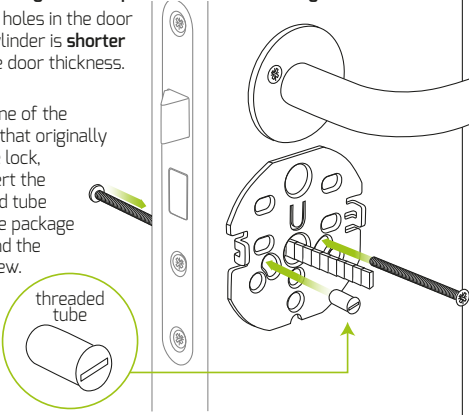
In the danalock box there's 4 metal back plates. A, B and C is for US deadbolt doors. U is for EURO and SCANDI doors.



6c. Mounting the back plate on the door - using the door holes

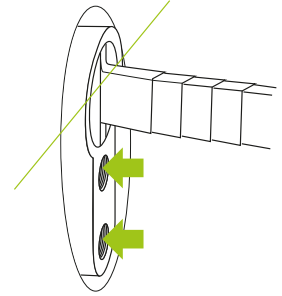
Use the holes in the door if the cylinder is **shorter** than the door thickness. (ill. 6a).

Insert one of the screws that originally held the lock, and insert the threaded tube from the package to extend the last screw.



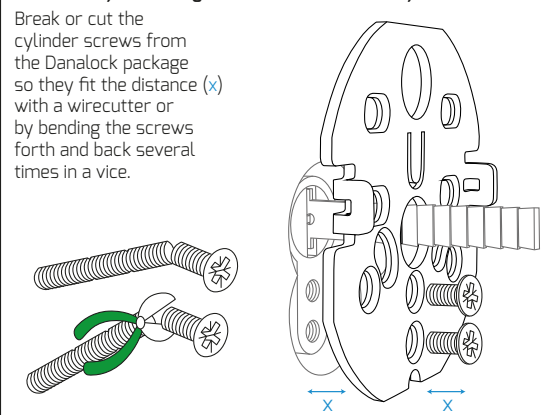
7a. Cylinder length just right

If the new cylinder matches the door thickness or your door doesn't have holes at both sides of the cylinder, use the holes in the cylinder to fix the back plate.



7b. If the cylinder length matches - break the cylinder screws

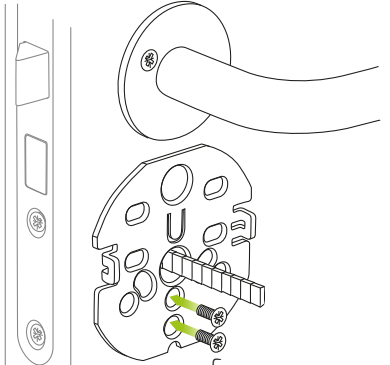
Break or cut the cylinder screws from the Danalock package so they fit the distance (x) with a wirecutter or by bending the screws forth and back several times in a vice.



7c. Mounting the back plate - using the cylinder holes

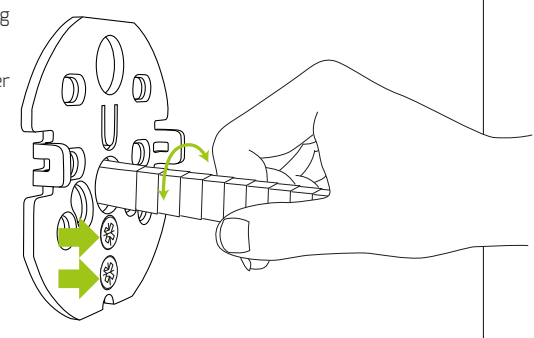
Place the back plate on your door so the tailpiece sticks out from the center hole.

Use the two broken screws in the cylinder holes and tighten the screws without using extreme force. If you tighten the screws too hard the lock can't turn!



8. IMPORTANT! Check that the lock still works!

Make sure that the lock still works properly by turning the tailpiece. If you can't lock and unlock this way please loosen the cylinder screws.

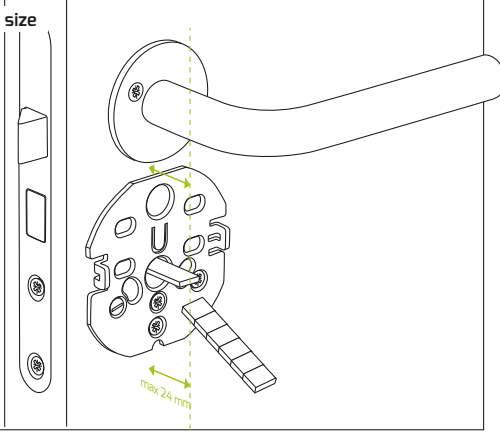


9. The tailpiece the right size

To avoid damaging the danalock you will have to shorten the new cylinder tailpiece.

It should only extend max. 24 mm from the door surface.

Use two pliers or a wire cutter to shorten the tailpiece.



10. Attach the tailpiece adaptor

Choose the right tailpiece adaptor from the Danalock package.

The green tailpiece adaptor is designed to match the adjustable cylinder.

Insert the tailpiece adaptor, that suits the tailpiece on your door in the center tube on the backside of your Danalock.

Press on the tailpiece adaptor until a click ensures it is fixed to the Danalock.

